



PROJECT		REF		REV	ITEM CODE	
LOCATION		DATE			PAGE	

SANITARY WARE SPECIFICATION SHEET

<p>Item Descriptions</p> <p>GROHE (Germany) "Eurosmart" Chrome plated single lever basin mixer 1/2" M-size; nominated flow rate 5 L/min in WELS Grade 1; Registration No. TM 17-0116</p>	<p>Dimensions</p> <p>L110 x W48 x H206 mm</p>	<p style="text-align: center;">Illustration/ Drawing</p> <div style="text-align: center;">  </div> <div style="text-align: right; margin-top: 10px;">     </div>
<p>Model</p> <p>23324001</p>	<p>Finish / Material</p> <p>Chrome Plated</p>	<div style="text-align: center;">  </div>
<p>Country of origin</p> <p>Thailand</p>	<p>Manufacturer</p> <p>GROHE Limited</p>	<div style="text-align: center;">  </div>
<p>Supplier</p> <p>Acme Sanitary Ware Co. Ltd Mr. Eric Wong/ Mr. Don Yuen</p>	<p>Contact Tel/Fax</p> <p>(852) 2388-7171 / (852) 2710-8012</p>	<div style="text-align: center;">  </div>
<p>E-mail</p> <p>acme@acmesanitary.com.hk</p>	<p>Website</p> <p>www.acmesanitary.com.hk</p>	
<p>"Eurosmart" Basin mixer 1/2" M-Size</p> <ul style="list-style-type: none"> · monobloc installation · metal lever · 28 mm ceramic cartridge with GROHE SilkMove · with temperature limiter · GROHE StarLight chrome finish · GROHE EcoJoy mousseur 5.7 l/min · GROHE FastFixation rapid installation system · smooth body · flexible connection hoses 		

Note: [YouTube \(Grohe 23324001\) https://www.youtube.com/watch?v=r7LrKwYy0v0](https://www.youtube.com/watch?v=r7LrKwYy0v0)
[YouTube \(Unboxing 23324001\) https://www.youtube.com/watch?v=xdT83mvCHUY](https://www.youtube.com/watch?v=xdT83mvCHUY)

* All information of the above is for the reference only. No prior notice is made if any changes.



PROJECT		REF		REV	ITEM CODE	
LOCATION		DATE			PAGE	

SANITARY WARE SPECIFICATION SHEET

GROHE EUROSMART

GROHE'S NUMBER 1 IN PREMIUM PERFORMANCE

For almost 2 decades, its legendary quality has made the GROHE's Eurosmart range the obvious choice for planners, architects and plumbers. Making it the number 1 worldwide with over 30 million sold. With its wide range of designs and functionalities, its long-lasting GROHE SilkMove Technology and German engineering know-how, Eurosmart is valued for every kind of project – bath, kitchen, commercial, large-scale or small. Eurosmart: always a first class choice since 1999.



GROHE SilkMove cartridge technology for smooth handling

This premium tap comes with a continuously variable water temperature and volume adjustment technology, ensuring effortless lever operation even after years of use.



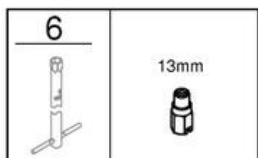
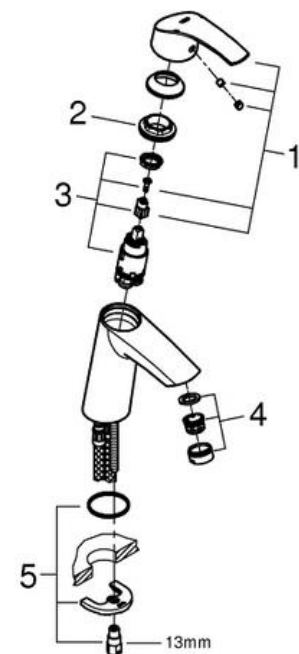
Easy to clean thanks to the GROHE StarLight chrome coating

Just wipe the tap down with a dry cloth – the ultra smooth surface finish is scratch resistant and ensures a lasting luminous sheen. You'll save plenty of time cleaning while your tap always looks shiny and new.



GROHE EcoJoy with water-saving function for reduced consumption

GROHE EcoJoy reduces water consumption by up to 50% without compromising on performance. Whenever you turn on your tap, you will enjoy a full jet of water while saving money nonetheless.



Medium-height spout
For accessibility and convenience

Smooth tap body with no waste



EcoJoy technology
Reduces water consumption by up to 50%

Quick and easy installation



Pos.-nr.	Prod. description	Order-nr.
1	Lever	46859000
2	Fitting ring	46715000
3	Cartridge	46580000
4	Mousseur	48159000
5	Shank fastening assembly	46249000
6	Mounting wrench	19017000*

* Optional accessories

Note:

* All information of the above is for the reference only. No prior notice is made if any changes.

註冊號碼 (Registration No.): TM 17-0116



自願參與用水效益標籤計劃 - 水龍頭
Voluntary Water Efficiency Labelling Scheme - Water Taps



茲證明
This is to certify that

將下列水龍頭在本計劃內註冊：
has registered the following water tap under this scheme :

牌子 / Brand	:	GROHE
型號 / Model	:	23324001
種類 / Type	:	Mixing
原產地 / Country or Region Origin	:	Thailand

在用水效益標籤上展示的標誌 <i>Symbolic Presentation on the Water Efficiency Label</i>	:		滴水點 <i>Water droplet(s)</i>
用水效益級別 <i>Water Efficiency Grade</i>	:	1	
耗水量 <i>Water Consumption</i>	:	5	公升/分鐘 <i>litres/minute</i>

簽發日期: 11 August 2017
Date of Issue:

水務署
Water Supplies Department



水務署署長(周世威代行)
for Director of Water Supplies



水務署

Water Supplies Department

香港灣仔告士打道七號入境事務大樓

Immigration Tower, 7 Gloucester Road, Hong Kong



圖文傳真
Facsimile

2824 0578

SD 3321/16 Pt.1 T/J(105)

11 February 2016



Approval of "GROHE" Basin Mixer

Your letter ref. WRC/1029 dated 18 January 2016 refers.

Having considered test report ref. J19164 issued on 6 January 2016 by the Nutek Systems, Ltd., this Authority accepts that the fitting described below complies with, and its use when correctly installed does not contravene, the Waterworks Ordinance and Regulations.

Name of Manufacturer: Grohe AG

Country of Origin: Thailand

Brand: Grohe

Details of Fitting: 3/8" Single lever basin mixer supplied with one pair of stainless steel wire braided water inlet flexible hose (manufactured by Neoperl GmbH, Model: Neoflex SPX DN6 G3/8") approved by UK's WRAS under ref. 1506306.

Model: 23324001

Body Markings: Logo of "Grohe" on body

Acceptance Reference No. C20160129

Page: 1

Expiry Date: 23 December 2020 (for mixer)
30 June 2020 (for flexible hose)

This Authority hereby permits the use of the above fitting in fresh water plumbing systems subject to full adherence to Waterworks installation requirements. In particular, you are required to draw your customers' attention to the following requirement-

"The cold water supply to the fitting shall be drawn from the same source that supplies the hot water apparatus so as to provide a balanced pressure and to obviate the risk of scalding in the event of a restriction or failure in the water supply."

A condition of this acceptance is that the fitting to be installed shall be replicas of the sample as certified by the testing agent mentioned above and without modifications. This acceptance may be withdrawn at any time if the standard of the fitting installed fails to meet that of the approved sample or if the fitting is found to be unsuitable for use in fresh water plumbing systems.

This acceptance is only applicable to the main body of the fitting, unless other specified.

For the use of the fitting in any project, the Acceptance Reference Number at the bottom of this letter must be quoted as a means of identification of acceptance of the fitting by this Authority.

Should you have any enquiries, please contact our Engineer Ms. K L FOK at tel. no. 2829 5657.

Yours faithfully,



(LAM Ching Man)
for Water Authority

c.c. WSD 3321/1/82] - without catalogue
E/CS(TS)1]